

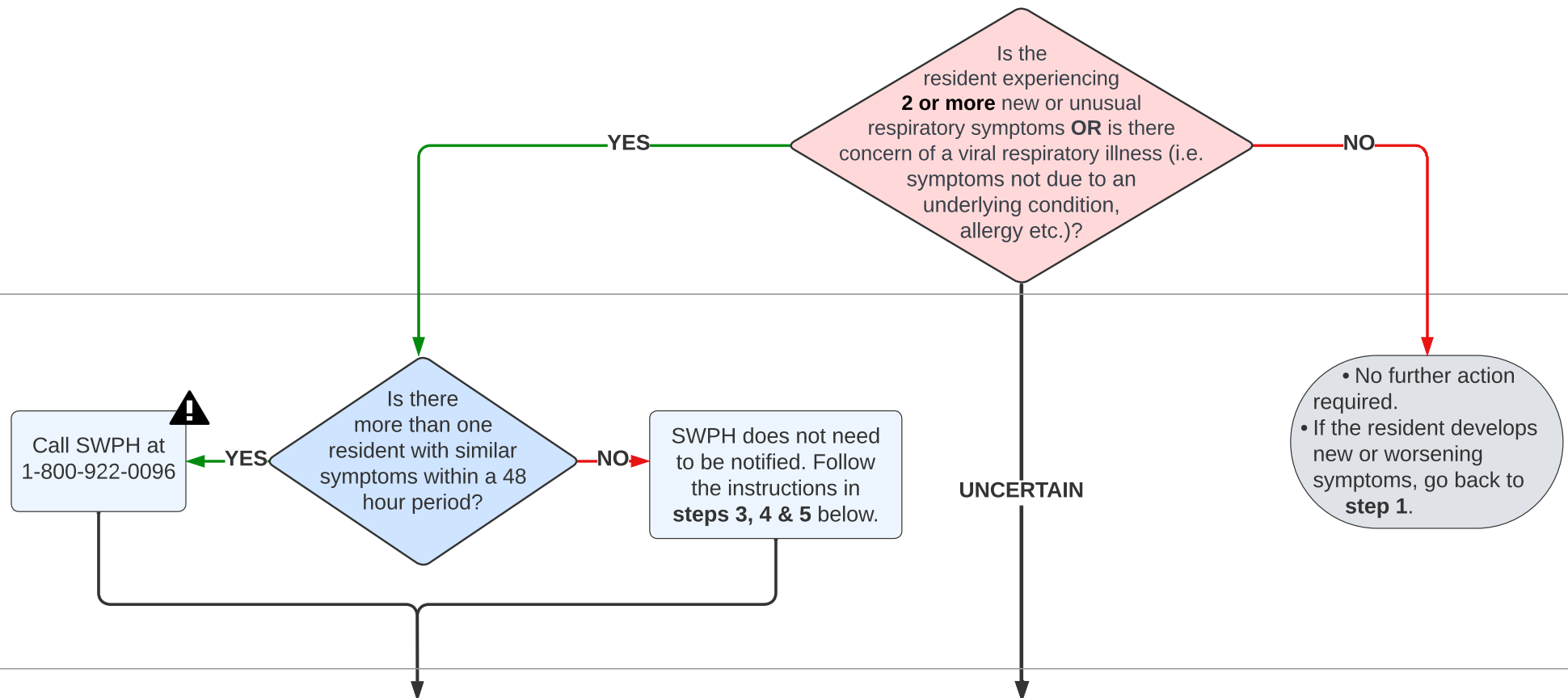
STEP 1: Assessment

STEP 2: Reporting to SWPH

STEP 3: Isolation & Additional Precautions

STEP 4: Testing

STEP 5: Test Results



**ISOLATION & ADDITIONAL PRECAUTIONS**

- **Case Isolation:** Isolate the ill resident in a private room. If a private room is not available, isolate the ill resident with their roommate with the following precautions in place: 1) draw the curtain 2) dedicate equipment 3) encourage masking 4) ensure adequate ventilation.
- **Roommate Isolation:** Isolate asymptomatic roommate.
- **Duration of isolation.** Go to **step 5 test results**.
- **PPE:** Use droplet & contact precautions while providing direct care or interacting with residents who are in isolation.
- **Cleaning & Disinfection:** Increase frequency of cleaning & disinfection of high-touch items and surfaces. Usual hospital grade disinfectant is adequate.
- **Hand Hygiene:** Is the number one way to prevent the spread of infection. Ensure staff, residents and visitors perform frequent hand hygiene.

**ISOLATION & ADDITIONAL PRECAUTIONS**

- **Isolate** resident for 24 hrs & **monitor for new or worsening** symptoms.
- **Consult** with the resident's physician for an assessment.
- **PPE:** Use droplet & contact precautions when providing direct care or interacting with the resident.
- **Cleaning & Disinfection:** Increase frequency of cleaning & disinfection of high-touch items and surfaces. Usual hospital grade disinfectant is adequate.
- **Hand Hygiene:** Is the number one way to prevent the spread of infection. Ensure staff, residents and visitors perform frequent hand hygiene.
- **If new or worsening symptoms develop**, go back to **step 1**.
- **If NO new or worsening symptoms develop and/or if there is an alternate, non-infectious diagnosis**, isolation and additional precautions may be discontinued and testing is not required.

**SPECIMEN COLLECTION & TRANSPORT**

- **Collect a nasopharyngeal (NP) swab** for COVID-19 AND MRVP testing.
- **Complete a COVID-19 & Respiratory Virus Test Requisition.**
  - ▶ Use the medical director or resident's physician as the ordering provider for non-outbreak samples
  - ▶ Ensure "COVID-19 and Respiratory Viruses" is checked off in box 5 of the requisition.
  - ▶ Ensure resident demographics on the requisition match the demographics on the specimen container.
- **Submit** non-outbreak samples (i.e., a sample from one sporadic ill resident) to the lab using your facility courier.
- **Contact** SWPH to discuss specimen collection and transport during a suspect or confirmed outbreak.

**COVID-19**

**Case Isolation:** Isolate for 5 days from symptom onset/test date AND until symptoms improved for 24 hours.

- **Residents able to mask:** Mask for 10 days from symptom onset/test date. Avoid communal dining and activities with non-exposed residents if masking cannot be maintained.
- **Residents unable to mask:** Remain isolated on droplet & contact precautions for 10 days from symptom onset/test date.

**Roommate Isolation:**

- **In the same room:** Isolate for 5 days, then mask when around others until day 10 from when the case became symptomatic or tested positive.
- **In a separate room:** Isolate for 3 days, then mask when around others until day 7 from when the case became symptomatic or tested positive.
- *Roommates who are unable to mask should maintain distance when around others*

**PPE:** Use droplet & contact precautions while providing direct care or interacting with residents in isolation.

**Antivirals:** Consult with resident's physician.

**SWPH Notification Required:** Yes

**Influenza, RSV, Human Metapneumovirus, Rhinovirus, Parainfluenza, Seasonal Coronavirus, Unknown (No Pathogen Detected)**

- **Case Isolation:** Isolate for 5 days from symptom onset OR until symptom-free, whichever is sooner. Encourage masking & distancing for 10 days from symptom onset.
- **Roommate Isolation:**
  - **In the same room:** Isolate for 5 days, then mask when around others until day 10 from when the case became symptomatic or tested positive.
  - **In a separate room:** Isolate for 3 days, then mask when around others until day 7 from when the case became symptomatic or tested positive.
  - *Roommates who are unable to mask should maintain distance when around others*
- **PPE:** Use droplet & contact precautions while providing direct care or interacting with residents in isolation.
- **Antivirals (Influenza only):** Consult with resident's physician.
- **SWPH Notification Required:** For a sporadic influenza case **OR** if there is a cluster of cases (with or without test results).